

This unique Mast Height Extension system is designed to provide additional lift height to a wide range of forklift trucks. This is especially useful if the existing mast does not comply with the requested height. The extra lift height may also allow for increased storage as more pallets can be stored at higher levels without changing the mast, (upright), on the forklift.

FEATURES

- Excellent visibility.
- Minimum lost load thickness.
- Existing lift truck forks can be used.
- Lift truck forks can be moved sideways.
- One hydraulic function.

OPTION

- Quick change mounting hooks.



Increase maximum height

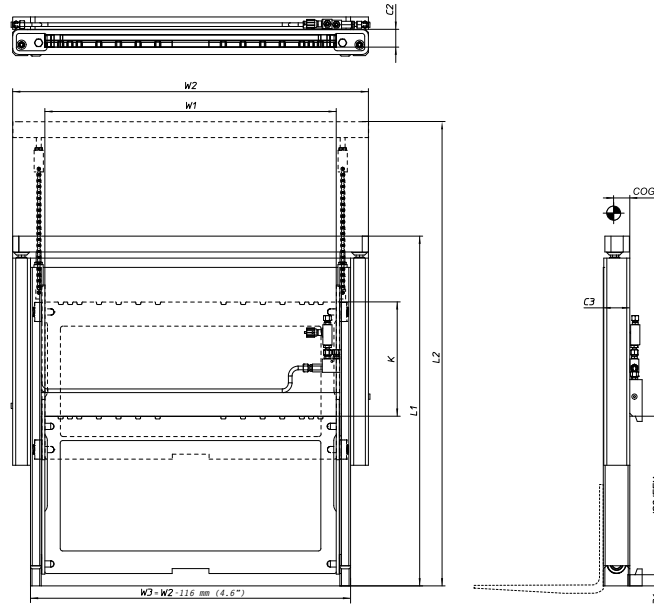
The Mast Height Extension is designed to increase the lift truck height of an existing lift truck mast. By adding the Mast Height Extension to a lift truck you can increase the maximum height of your racking without the need to change the mast or buy a new lift truck. Similarly the Mast Height Extension can be used to improve under-door clearance whilst maintaining greatest possible lift height.



Heavy duty MHEH

MSE-FORKS is also able to provide you with a heavy duty Mast Height Extension (MHEH) with a capacity of 2000 kg., as well as 3000 kg., units with standard lift heights up to 1000 mm! The heavy duty units offer a clean, compact design with a lost-load-thickness of just 50 mm. This means there is minimal influence on the residual capacity of the lift truck.

Mast Height Extension



Model	Capacity on LC 600 mm (kg)	Stroke (mm)	L1/L2 (mm)	W1 (mm)	W2 (mm)	C2 (mm)	C3 (mm)	CoGh (mm)	CoGv1 (mm)	CoGv2 (mm)	Weight (kg)
MHEH 20 0300 550	2000	300	859/1159	550	750	50	85	30	415	540	118
MHEH 20 0500 550		500	1020/1520					31	495	680	136
MHEH 20 0700 550		700	1220/1920					32	585	830	154
MHEH 20 1000 550		1000	1520/2520					33	720	1045	180
MHEH 20 0300 800	2000	300	859/1159	800	1000	50	85	28	415	550	138
MHEH 20 0500 800		500	1020/1520					29	495	695	156
MHEH 20 0700 800		700	1220/1920					30	580	850	174
MHEH 20 1000 800		1000	1520/2520					32	710	1065	200
MHEH 30 0300 550	3000	300	930/1230	550	750	57	85	27	470	608	147
MHEH 30 0500 550		500	1130/1630					29	545	760	164
MHEH 30 0700 550		700	1330/2030					30	630	930	182
MHEH 30 1000 550		1000	1630/2630					31	745	1155	210
MHEH 30 0300 800	3000	300	930/1230	800	1000	57	85	25	465	615	177
MHEH 30 0500 800		500	1130/1630					28	540	775	194
MHEH 30 0700 800		700	1330/2030					29	620	926	212
MHEH 30 1000 800		1000	1630/2630					30	745	1150	240
MHEH 30 0300 1000	3000	300	930/1230	1000	1200	57	85	23	450	610	210
MHEH 30 0500 1000		500	1130/1630					25	530	770	230
MHEH 30 0700 1000		700	1330/2030					27	600	930	250
MHEH 30 1000 1000		1000	1630/2630					28	715	1163	280

- Possible in combination with KOOI-REACHFORKS®.
- Optional: quick change mounting hooks.
- Capacities shown are nominal and apply to the attachment and not the lift truck. Other capacities and dimensions on request.
- Remark: When tilting mast carriage please contact MSE-FORKS.